

VROOOM VROOOM ZOOM

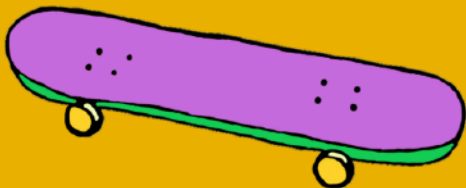
How do Zoom Towners get around? Do they just waddle everywhere on toilet paper roll legs, or do they bike, drive, scoot?

Here are some ideas about how to make some wheels for your Zoom Towner so they can cruise out of town and away to the beach!



IDEAS FOR BASE

- Toilet paper tube
- Sponge
- Raisin box
- Cardboard
- Plastic bottle



IDEAS FOR WHEELS

- Bottle caps
- Corks
- Salt dough
- Tape balls
- Cut toilet paper tubes
- Yogurt squeeze caps

PUTTING IT ALL TOGETHER

You need your wheels to keep on turning so your Zoom Towner can get where they're going. Attach the wheels to the base of your vehicle by:

- 1 Poke a hole through the base and wheels (your grown up may need to help with this part)
- 2 Stick something long like a skewer, tooth pick, or pipe cleaner through the base holes. This is called the axle.
- 3 Attach the wheels to the axle. You may want to use a little glue.
- 4 Bon Voyage!